



SWAN
HOTEL & SPA

The Swan

Welcome

It's lovely to have you here!

Here at the Swan, we pride ourselves on being able to give you and your team everything you should need to conduct business, as well as flesh out your trip with fun activities. We'll provide relaxing treatments to relieve any work tensions, all while being nestled into the inspiring Lake District, to ensure you come away from your time with us with new ideas and an empty to-do list!

We hope you have a Swanderful time!



About us

We are nestled at the foot of Newby Bridge across the picturesque River Leven, on the southern end of Lake Windermere. The 5-arch bridge has been in place since 1651 and should you decide to cross it - we've got everything you need for a successful team trip away!

On site, we have 82 rooms ranging from our small Lovely rooms through to our luxurious Lofts, as well as 5 private Nests. There are 3 eateries - The Swan Inn, the Brasserie and The Café. A Health Club if you fancy getting physical, and a newly renovated spa where you can slip into relaxation in sustainable style.

We can offer you more than just a meeting space - we can offer you a range of activities both on-site and in the stunning surrounding area to build your team dynamic. The Swan is situated within an inspiring landscape that you can dive into or simply admire from your desk. Get the ideas flowing and then kick back in place of comfort and relaxation for your downtime.

Board meetings will never be boring with us!



Team Building

**'Paddleboard The Lakes' from our very own
marina based at The Swan.**

Grab your boards from our lovely little paddle hut, and hop aboard. A great team building exercise and a whole lot of fun.

BOARD HIRE ONLY

£30 per board for 2 hours
£60 per board for 4 hours

XL RIDE MULTI-PERSON PADDLEBOARD:

£20 per person for 1 hour hire
(minimum 3 people)

MASTER THE BASICS LESSON (1.5 HOURS):

£40pp for a group of 3 – 6 Adults
£50pp for 2 Adults
£65pp for private one-to-one tuition for 1 Adult

TEAM-BUILDING SESSION (1.5 HOURS):

£50 per Adult (minimum 4 people per group. Group discount applied to bookings of 10 or more participants.)





Graythwaite

Located close by, Graythwaite offer a range of outdoor activities to quench your desire for adventure and get the adrenaline pumping! With activities ranging from 4x4 off-roading to bushcraft, clay pigeon shooting and axe throwing to kayaking and more - we can arrange a private group outing for you and your team to allow you some time away from the desk and into the great outdoors!

Walking

Based in the Southern Lake District, we are in a prime location for you to get your boots on and conquer mountains or wander lower-level walks. From fields and woodlands to peaks and crags, you are bound to build on your team dynamic within our diverse landscape! We can provide bespoke walking tours, too, should you require a guide for your team trek!



Wild Swimming

We have pools, jacuzzis and hot tubs here at the swan - but why stop there? We are situated alongside the River Leven and are a stones throw from the south end of lake Windermere, where the water is ready to welcome you! From wild pools, waterfalls and the lakes themselves - we can arrange for a wild swim expert to guide you in a blood-pumping dip into the Lake District's many waters no matter the season or weather!

Accommodation

The Swan Hotel & Spa is a luxurious and modern hotel that is well-suited for hosting individual corporate travellers, group conferences and larger business events.

Our Fabulous room type is included within our corporate package as standard, however, we do have a range of room types and we're able to work up a package to suit - especially if you're looking to treat your team to a little added luxury!

Our Fabulous rooms are known for featuring all of the home-from-home comforts you might need! From sinking into a soft and cosy bed, to an en-suite bathroom complete with luxury toiletries.

In your room, you will find...

Spacious, light, and bright interiors

Super King bed (or Twin beds available on request)

En-suite bathroom with luxury amenities from Bath House

River view available on request, please note this is subject to availability

As a modern hotel, we also offer site-wide Wi-Fi access as standard and have heating and cooling options within your bedroom. Should you opt for some opulence during your stay, you can order room service or take a trip to The Holte Spa.

Our rooms are also kitted out with desk space that's complemented by stunning views of our Spa Garden or the River Leven. Inspired!



Fabulous Rooms

Spacious, light, bright, airy and truly fabulous!

Super King beds

En Suite Bathroom

Luxury amenities from Pure Lakes

Health Club Access

Can Twin, Interconnect and Dog friendly options are available

More Info...

Our Fabulous rooms are spacious and full of quirky character which is why they're an absolute favourite with our guests here at [The Swan](#)! Featuring prints and patterns galore, contrasting colours and Swanderful finishing touches you won't find anywhere else, our Fabulous rooms are the perfect choice for the full Swan experience.





Splendid Rooms

Our Splendid rooms have been designed with two glorious themes in mind!

Garden Splendid rooms feature gorgeous green hues and hillside views and our River View rooms have been designed to encapsulate the colours of the water.

Both room types house a fully stocked minibar, a coffee machine, a Smart TV and a Super King bed.

Holte Spa access is included in th

Rooms include:

- Mini bar
- Super king beds, made here in Cumbria
- Sustainable luxury bedding
- Pure Lakes luxury lake district amenities
- In-room ethical coffee machine (Penningtons of Cumbria) - all sustainable and biodegradable
- Sustainable carpets made from local wool

More Info...



Lofts

Custom designed luxury loft suites
Marble bathrooms
In-room roll top baths
Super king beds with pop-up TVs
Whitewashed hardwood floors
Electric log burners
Enjoy complimentary Holte Spa access

[More Info...](#)

The Nests

Our Nest cottages are the epitome of comfort and style. Designed to accommodate up to 8 people (max 6 adults as we have bunk beds!) these cottages offer ample space for families or groups of friends. With features such as log burner fires, private patios, and en-suite bathrooms, these cottages offer a luxurious escape. The interior design is light, bright, and quirky, with a unique and individual style that sets these cottages apart from others. Whether you're seeking a cozy getaway or a stylish retreat, the cottages at the Swan Hotel are the perfect choice. Book your stay today and experience the unique charm and comfort of these one-of-a-kind cottages in the Lake District. Oh, and don't forget your pet pooch can join you in The Nest too!



[More Info...](#)





Food & Drink

Here at The Swan, we can cater for you in anyway you need!

From light bites at the The Café and cosy comfort food in the Swan Inn, all the way to a traditional finer dining experience in our Brasserie, our three fabulous eateries are a firm favourite for foodies far and wide!

The Swan Inn

Serving good old pub grub in signature Swan style - our pub is the heart of the hotel. Here you can grab a lovely lunch, delicious dinner or a classic Afternoon Tea!

[View Menu](#)

The Brasserie

For those slightly special occasions... perhaps you're in need of a romantic meal or have an occasion to celebrate. You can receive a traditional dining experience in our Brasserie, with a 3-course menu designed by the head chef himself.

[View Menu](#)

The Swan Café

The Swan Café is a relaxing space situated right next door to the Holte Spa. Serving a range of delicious drinks and sweet treats, you'll have views of the river in a bright, relaxing atmosphere. It's the perfect destination for every guest. In the summertime you're in peak position next to our ice cream hut... so you can beat the queues!

[View Menu](#)



Hotel Facilities

Health Club

As an overnight guest at the hotel, you will have automatic Health Club access - hooray! Our Health Club consists of our gym, kitted out with state-of-the-art Matrix equipment - swimming pool, jacuzzi, steam and sauna. Plus, we have a range of classes you can access, too! When you're done getting physical, head on down to Holte Spa to soothe those aching muscles with a glass of fizz and your favourite treatment.

Our Health Club is open:
7am – 9pm, Monday - Friday
8am – 8pm, weekends and bank holidays

Marina

Location, location, location... we've got it all! Cross the historic Newby Bridge and land on our doorstep, or walk along the riverside until you reach our marina! The River Leven stretches from us, all the way to the foot of Lake Windermere, with our very own marina sitting in between. You can sit and watch the water ripple along, enjoying the peace and quiet, or grab a paddleboard from our Paddle Hut and get exploring! When you're done and feeling like a refreshment, pop into our The Swan Café for an ice cream cool-down, or a slice of cake!





Hotte Spa

Our brand new Spa, based between the mountains of the Lake District and the lovely River Leven, is a slice of sustainable, informal luxury that your Lake District holiday needs. Enjoy a range of treatments, an authentic thermal journey or head outside - no matter what the unpredictable Lake District weather is doing - and enjoy our large jacuzzi or sauna. Relaxation, guaranteed!



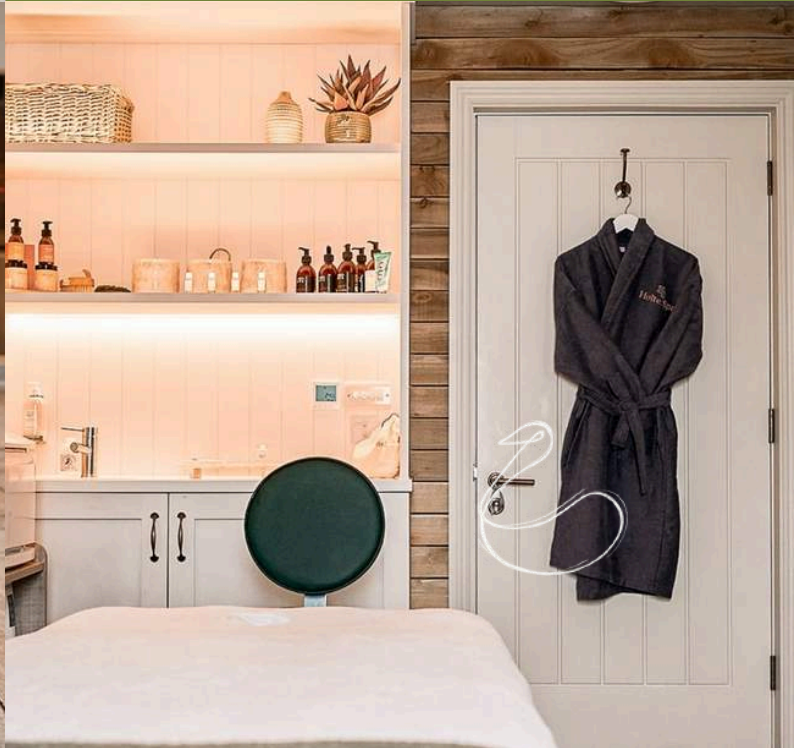
Thermal Suite & Garden

From our naturally filtered jacuzzi pool with gentle jets to alleviate tight muscles and tension, to our experience showers complete with water effects such as tropical rain, mist, monsoon and cold waterfall to deliver a multi-sensual encounter, you can truly immerse yourself in Holte Spa and escape the hustle and bustle of daily life.



- 100% humidity steam room
- 12 seater Jacuzzi pool with jets
- Indoor/outdoor hydrotherapy pool
- Ice buckets
- Outdoor Finnish sauna
- Indoor Finnish-inspired sauna
- Relaxation corners & lounge areas
- Hot or cold experience showers

[More Info...](#)



Corporate Events

The Swan Hotel is a luxurious and modern hotel that is well-suited for hosting conferences and business events. With its state-of-the-art facilities and experienced staff, it is the perfect venue for a wide range of events. The hotel features a variety of spacious and well-equipped corporate event venues that can accommodate groups of different sizes. Each room is equipped with the audio-visual technology, including projectors, televisions and sound systems, with high speed Wi-Fi, ensuring that presentations and speeches can be delivered with the utmost clarity and impact. The hotel's dedicated events team is on hand to provide assistance with planning, coordination and execution of the event to make sure everything runs smoothly. Additionally, the hotel offers a range of accommodation and dining options for conference attendees, as well as leisure facilities such as a fitness center and spa, making it the ideal location for both business and pleasure.

More Info...



The Ballroom

With stunning chandeliers and river views,
perfect for up to 80 guests.



The Bridge room

The perfect break out room addition to
larger conferences. A cosy space with
seating up to 12 guests.



The Clubroom

Featuring its own bar, seating up to 80
guests. This room is perfect for dinner
parties and evening entertainment.



The Barn

A rustic and picturesque space
accommodating up to 80 guests.



The Studio

This bright and airy space is ideal for wellness retreats, accommodating up to 60 guests comfortably seated, or 20 for yoga & fitness classes.



Conference Packages

Full day conference package - £60pp

- 3 servings of tea and coffee with biscuits
- A selection of sandwiches on local artisan breads, served with chips, sausage rolls and salad garnish
- Water replenished throughout
- Room hire for main conference room
- Equipment: projector & screen, flipcharts, pads and pencils
- Use of WiFi throughout the Hotel

24 hour conference package - £215pp

- 3 servings of tea and coffee with biscuits
- A selection of sandwiches on local artisan breads, served with chips, sausage rolls and salad garnish
- Water replenished throughout
- Room hire for main conference room
- Equipment: projector & screen, flipcharts, pads and pencils
- Use of WiFi throughout the Hotel
- Dinner in the Brasserie up to £40 per person
- Bed & Breakfast
- Use of our health and fitness club

If you want to keep it short and sweet we offer daily room hire charges from £150 and you can simply add the extras you need at additional costs.

We're happy to host parties for any occasion, for more information check out our [private party venue](#) in the Lake District.



Private Dining

MENU

Starters

Soup of the day with freshly baked breads
(V, GF by request)

Locally smoked salmon, baby herbs, lemon crème fraîche, warm rye bread
(GF by request)

Chicken Liver parfait, Hawkshead onion marmalade, toasted brioche
(GF by request)

Oven baked camembert, fig and cinnamon chutney, sour dough bread
(GF by request)

Mains

Oven roasted chicken breast, creamed potato, seasonal vegetables, wild mushrooms, red wine jus (GF)

Cassoulet of beans, mushrooms and root vegetables in a red wine and tomato broth, served with crusty bread (VE, GF by request)

Steak and ale pie, served with creamed potatoes, seasonal vegetables and a stout and onion gravy

Roasted fillet of cod, butterbean and leek chowder, wilted greens (GF)

Desserts

Sticky toffee pudding, sticky toffee Sauce, vanilla bean ice cream (V,GF)

Apple and cinnamon crumble, served with custard (V)

Chocolate mousse, hazelnut ice cream, Nutella sauce (V)

Cheese selection, crackers, chutney and grapes (GF by request)

Please note we are NOT a 'nut free kitchen' and due to this cross contamination may occur. Some menu items may contain food substances to which you have an allergy. Full allergen information available, please ask a Manager who will be more than happy to advise.



01539 531 681

@swanhotelnewbybridge

www.swanhotel.com

THE SWAN HOTEL & SPA

NEWBY BRIDGE, ULVERSTON, CUMBRIA, LA128NB